



TOSOH

RZETA

TECHNICAL DATA

CHARACTERISTICS & ADVANTAGES

Reactive Gelling Catalyst for Flexible and Semi-rigid Foams

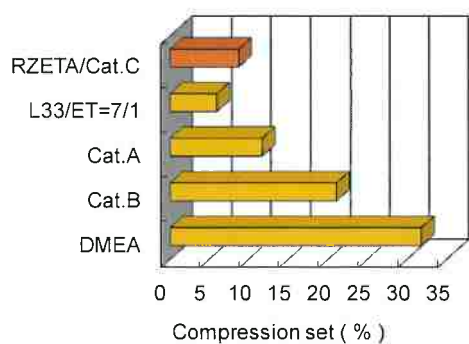
- Low amine emission
- Provides excellent foam properties, especially durability performance
- Strong gelling catalytic activity

Experimental Data

Durability Performance

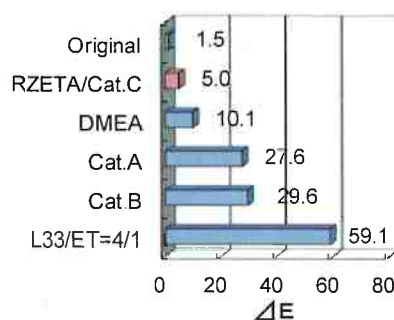
(Formulation:TM80 HR Foam)

Dry-set (B)



PVC Staining Test

(Formulation:All-MDI HR Foam)



Test condition

PVC White Sheet

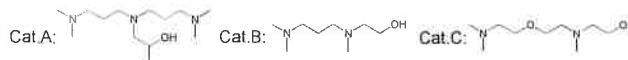
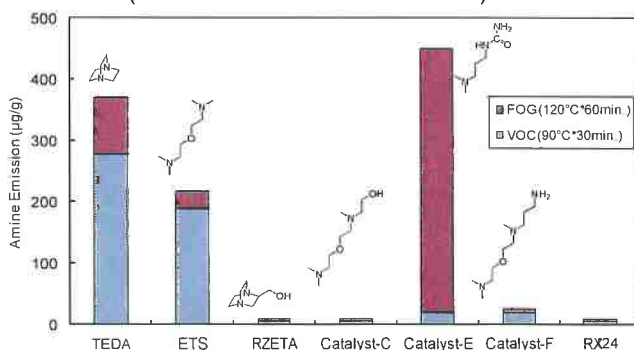
100°C×72hrs.(1L bottle)

Foam Sample:

7cm*7cm*3cm

Amine Emission Test (VDA278)

(Formulation:All-MDI HR Foam)

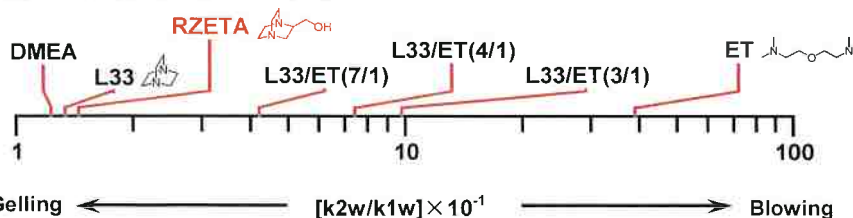


CATALYTIC ACTIVITY

RZETA : Gelling activity[k1w] =2.67*10¹(l²/g·mol·h)

Blowing activity[k2w] =0.39*10¹(l²/g·mol·h)

Ratio(Blowing/Gelling) =1.45*10⁻¹



TOSOH CORPORATION

www.tosoh.com

Page 1 of 2

Created on 27/June/2013



TOSOH

RZETA

TECHNICAL DATA

APPLICATIONS

- Flexible Molded Foams and Flexible Slabstock Foams
- Semi-Rigid Foams

TYPICAL PROPERTIES

Item	Physical data
Amine Value (mgKOH / g)	250 - 276
Water content (%)	11 (approx.)
Appearance	Yellowish Liquid
Specific Gravity (Water = 1 @20°C)	1.06
Viscosity (mPa.s. @25°C)	286
Freezing Point (°C)	Available
Boiling Point (°C)	230-300
Exp. Pressure (Pa. @20°C)	Not Available
Flash Point (°C)	137
Solution in Water	soluble
pH (10% MeOH) @20°C	10.9
Calculated OH number (mgKOH/g)	633

Typical properties; not to be construed as specifications.

AVAILABILITY

- 200kg (200L drum)
 - 20kg (20L pail)
- Samples are available upon request

CONTACT INFORMATION

Tosoh Corporation
 3-8-2 Shiba, Minato-Ku
 Tokyo 105-8623
 Japan
 Tel: +81-3-5427-5164
 Fax: +81-3-5427-5215
 E-mail: fc_amine@tosoh.co.jp

Tosoh Europe B.V.
 Crown Building-South, Hullenbergweg 359,
 1101 CP Amsterdam Z.O.,
 The Netherlands
 Tel: +31-20-565-0010
 Fax: +31-20-691-5458
 E-mail: info-tse@tosoh.com

Tosoh Asia Pte. Ltd.
 63, Market Street, #10-03,
 Keppel Tat Lee Bank HQ Building,
 Singapore 048942
 Tel: +65-6226-5106
 Fax: +65-6226-5215
 E-mail: info@tosoh.com.sg

Tosoh Specialty Chemicals USA, Inc.
 4080 McGinnis Ferry Road, Suite 1303
 Alpharetta, GA 30005
 U.S.A.
 Tel: +1-866-688-9501
 Fax: +1-770-442-2785

Tosoh (Shanghai) Co., Ltd.
 Room 2618, International Trade Center,
 No. 2201 Yan-An West Road, Shanghai,
 China 200336
 Tel: +86-21-6270-2810
 Fax: +86-21-6270-2820